

REGISTRATION

Registration Early bird fee	400€
Registration Early bird fee CWIG members	350€
Late registration fee (after September the 15th)	500€
Late registration fee (after September the 15th) CWIG members	450€

Registration fee includes: Acces to the scientific sessions and live surgery, lunches, coffee breaks, course materials (scientific program and certificate of attendance).

Registrations must be made through the website <http://aulavhebron.net/> (future courses section).

Cancellations made before 1st September, will be refunded 85% of the registration fee. After that date, no refund will be made.

LANGUAGE:

The conference language will be English.

SPONSORS:

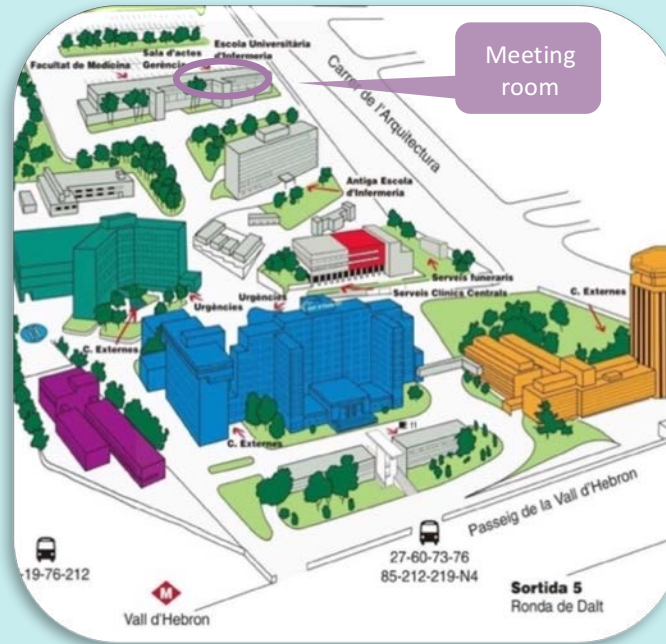


CASE REPORTS:

If you are interested in presenting a case report for discussion with the experts please send a summary until the 15th of september to: pectusbcn@vhebron.net

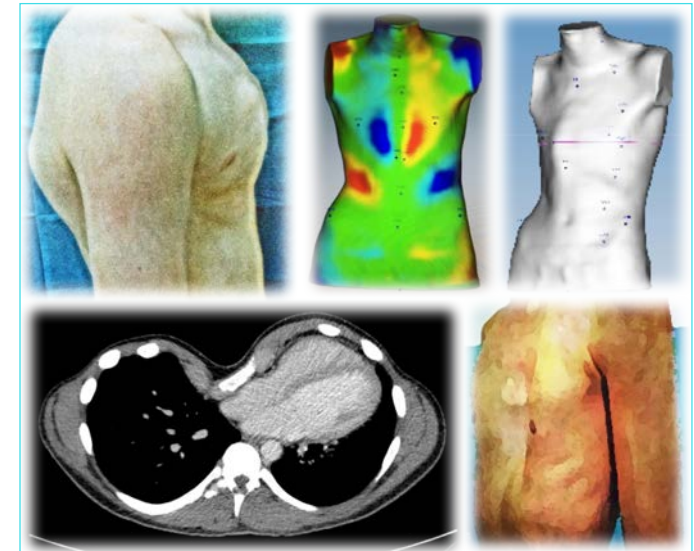
VENUE

Sala de actes – Pabellón Docente
Hospital Universitari Vall d'Hebron
Paseo Vall d'Hebron, 119 – 129



SECRETARIAT

Aula Vall d'Hebron
E-Mail: inscripcionesaulavh@vhebron.net
Tel: +34 93 489 45 68



I INTERNATIONAL WORKSHOP ON CHEST WALL DEFORMITIES

19th-20th OCTOBER 2017
BARCELONA-SPAIN



LIVE SURGERY by
INTERNATIONAL GUEST

More information:
pectusbcn@vhebron.net
<http://www.aulavhebron.net/>

Course Direction:
Department of Pediatric Surgery
Hospital Universitari Vall d'Hebron. Barcelona, Spain

PRELIMINARY PROGRAMM

THURSDAY 19TH

FRIDAY 20TH

PROGRAMM CHAIRS

Direction:

Manuel López Paredes & Ana Laín Fernández
Department of Pediatric Surgery
Hospital Universitari Vall d'Hebron. Barcelona, Spain

Co-direction:

Laureano Molins
Head of Thoracic Surgery Department
Hospital Clínic de Barcelona. Spain

Local Organization:

Laura García, Carlos Giné, Josep Lloret, Rosario Nuño, Marino Asensio, Sergio López, Gabriela Guillén, José Andrés Molino, Gloria Royo, Romy Gander, Mohammad Ezzeddine, David Sánchez.

International Organization:

Jaqueline Narvaez (Los Angeles, USA)

PROFESSORS:

Donald Nuss (Norfolk, USA)
Hyung Joo Park (Seoul, South Korea)
Mustafa Yuksel (Istanbul, Turkey)
Marcelo Martínez-Ferro (Buenos Aires, Argentina)
Robert Kelly (Norfolk, USA)
Hans Pilegaard (Aarhus, Denmark)
Frank-Martin Haecker (Basel, Switzerland)
Jose Ribas Milanez de Campos (Sao Paulo, Brazil)
George W. Holcolmb (Kansas City, USA)
Dawn E. Jaroszewski (Phoenix, USA)
Patricio Varela (Santiago de Chile, Chile)
Andre Hebra, (Orlando, USA)

08.00-08.30 Registration
08.30-08.45 Welcome
08.45-09.00 Introduction talk
09.00-09.15 Case 1 & 2 presentation

09.15-12.00 **Case 1 & 2 live surgeries:
Pectus excavatum**



11.00-12.15 *Coffee break & exhibition*

12.15-12.30 Case 3 & 4 presentation

12.30-14.30 **Case 3 & 4 live surgeries:
Asymmetric Pectus excavatum**



13.30-15.00 *Lunch*

ROUND TABLES: PECTUS EXCAVATUM

15.00-15.45 1) Diagnostic workup
- CT or RMI ?
- 3D scan
- Which index should we use?

15.45-16.45 2) Treatment
- Non-operative treatment of pectus excavatum
- Nuss procedure: tips and tricks
- Cross bar technique
- Repair in Adults

16.45-17.15 *Coffee break & exhibition*

17.15-18.10 3) Sternal elevation
- Vacuum bell
- Crane technique
- Pectus-up
- Rule-track
- Minimally Invasive Repair using a Subxiphoid Incision

18.10-19.00 4) Complications:
- Intraoperative complications
- Dealing with complications during bar removal
- Re-do procedures in pectus excavatum

08.30-08.45 Introduction talk
08.45-09.00 Increase in patient volume after setting up a dedicated Pectus Center
09.00-09.15 Case 1 & 2 presentation

09.15-12.00 **Case 1 & 2 live surgeries:
Pectus carinatum**



11.00-12.15 *Coffee break & exhibition*

12.15-12.30 Case 3 presentation

12.30-14.30 **Case 3 live surgery:
Hybrid case**



13.30-15.00 *Lunch*

ROUND TABLES: OTHER TYPES OF CHEST WALL DEFORMITIES

15.00-15.45 1) Physiologic changes in pectus excavatum correction
- Cardiac changes during pectus excavatum correction
- Intraoperative TEE in pediatric patients
- Physiological changes which appear after correction of a pectus excavatum

15.45-16.45 2) Pectus carinatum and hybrid malformations
- Non operative management
- Tips and tricks: Abramson technique
- Sandwich technique
- Open approach

16.45-17.15 *Coffee break & exhibition*

17.15-18.15 3) Techniques in other types of chest wall deformities:
- Curranino-Silverman
- Correction of chest wall deformities after cardiac surgery
- Sternal cleft
- Poland syndrome

18.15-18.45 Case reports

18.45-19.00 Closing remarks

20.30 *Gala dinner*